

**Teknisk chef Mads Korsholm Kristoffersen, SUH**  
**Projektleder Commissioning Claus Bernthsen, USK**



# FSTA Fagligt Forum

Sjællands Universitetshospital, Køge

10.09.2019

**Sikring af kritiske forsyninger under byggeri**



REGION  
SJÆLLAND 

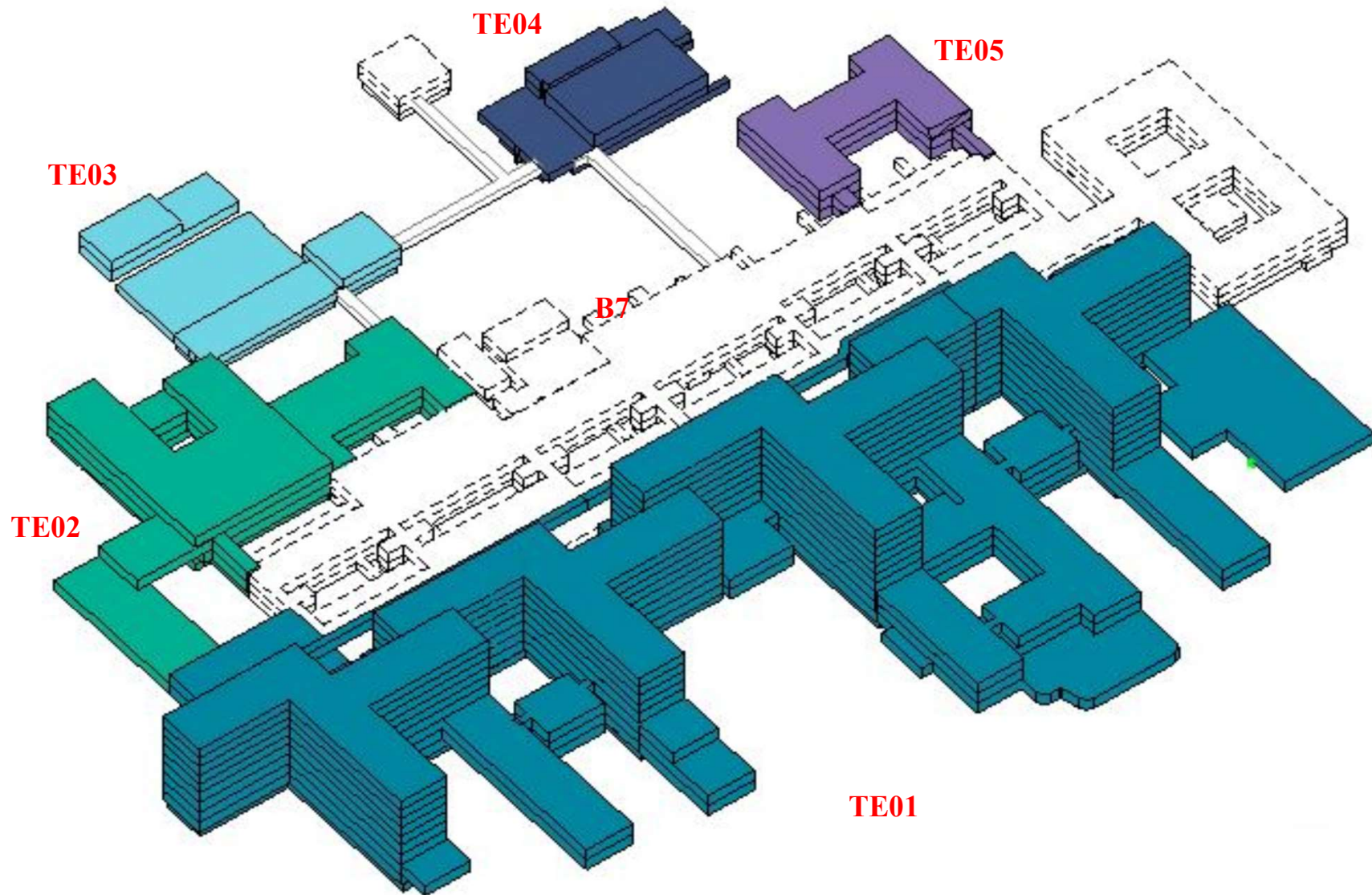
*- vi er til for dig*

# Program

---

- **Præsentation Projekt Universitetshospital Køge (USK)**
  - Nøgletal og status, driftsorganisation
- **Kritiske Forsyninger, herunder bl.a.**
  - EL-forsyning, herunder nødel-forsyning
  - Varme
  - Køling
  - Vandforsyning (drikkevand og sprinklerforsyning)
  - Medicinske luftarter (O<sub>2</sub>, Trykluft, Vakuum)
  - Svagstrøm (IT-netværk, BMS, Kritiske alarmer, ABA, DAS-telefoni m.v.)
- **Handleplaner**
  - Risikovurdering
  - Fall Back -løsning

# Etaper

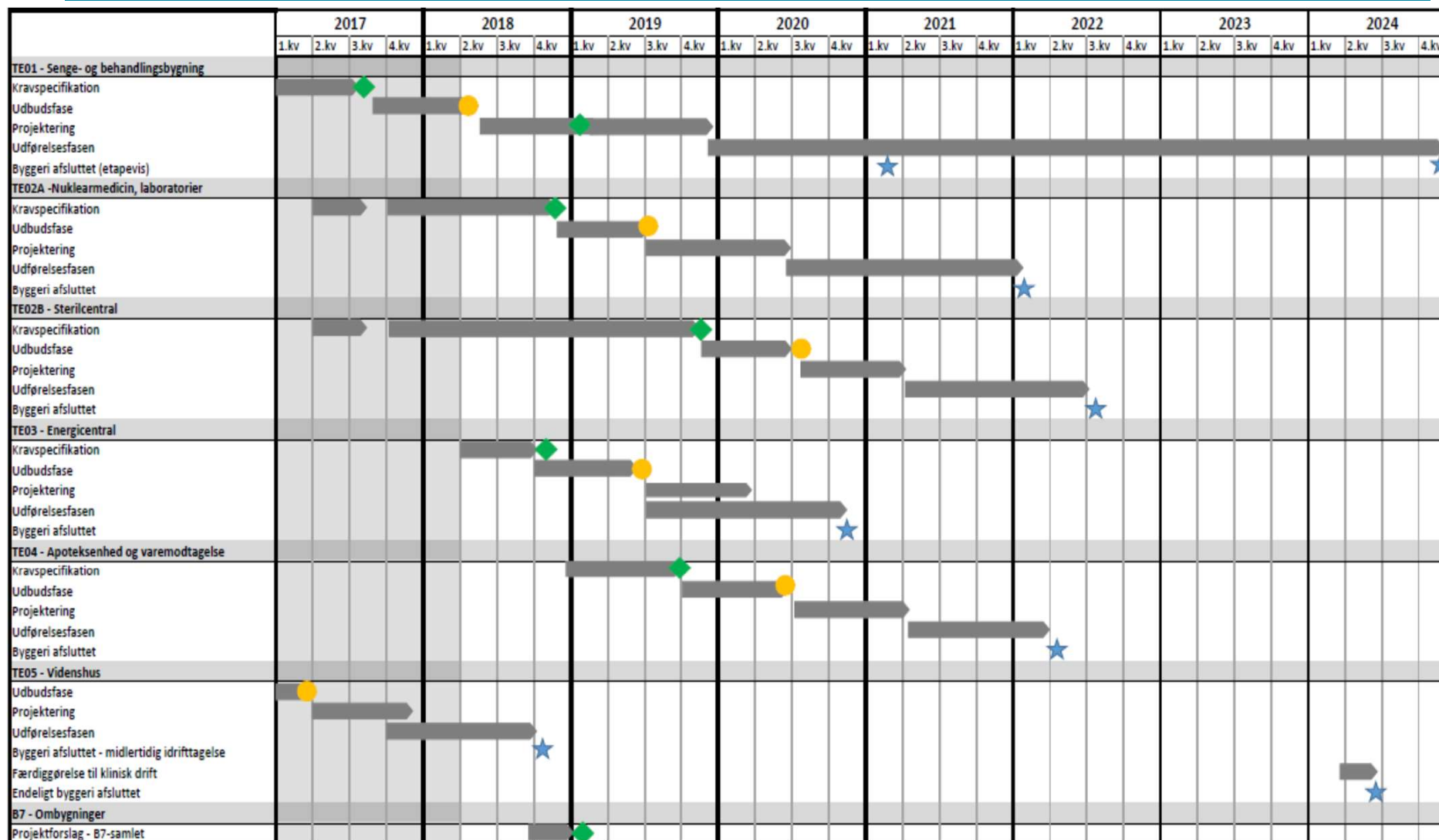


# Etaper

---

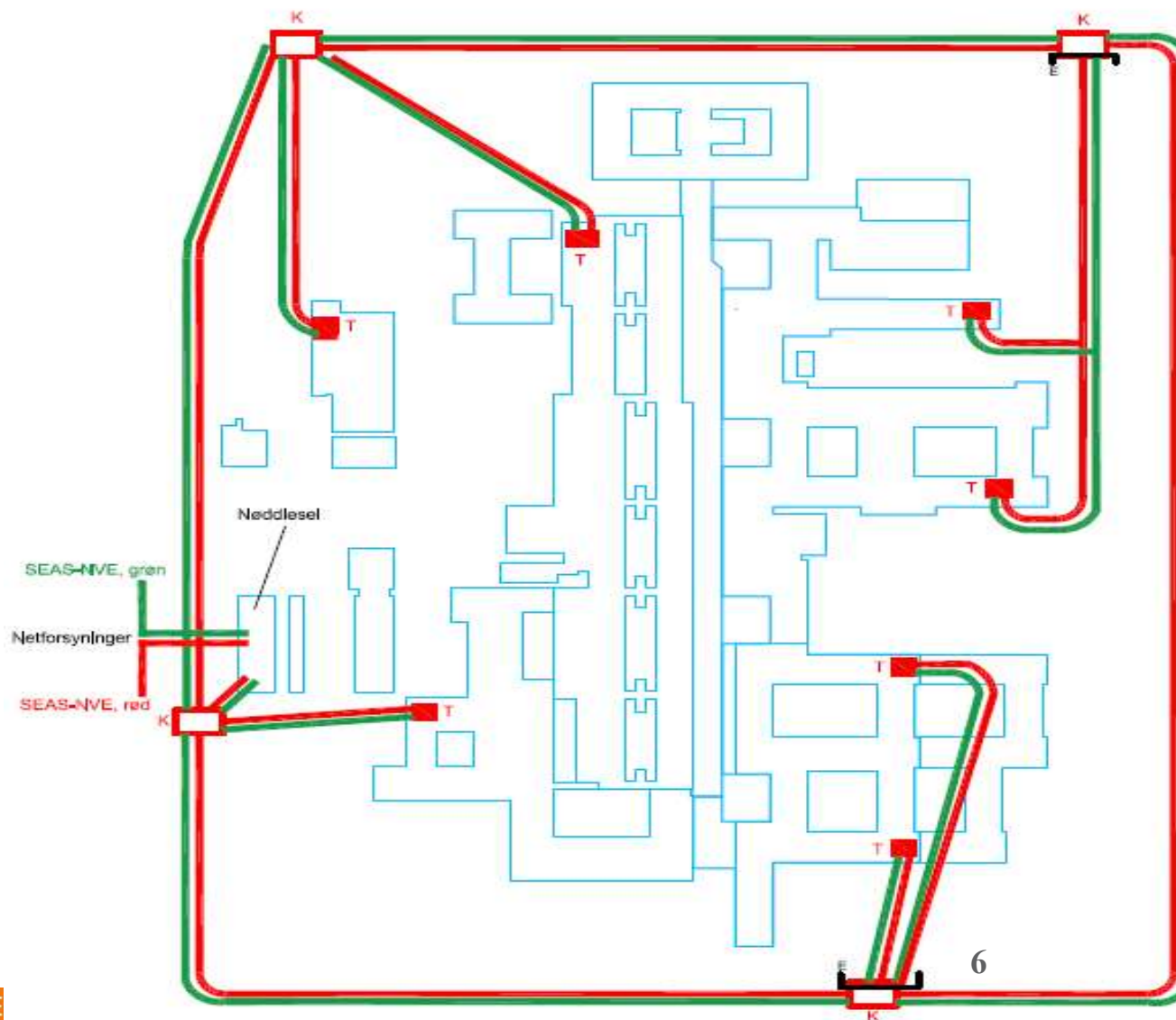
<b>TE01</b>	Senge/behandling, herunder stråleterapi	110.000 m <sup>2</sup> Nybygning
<b>TE02</b>	Klinisk fysiologi Laboratorier Sterilcentral	15.500 m <sup>2</sup> Nybygning
<b>TE03</b>	Fjernkølecentral, 4,5-6,0 MW Nødgeneratorgård 10 kV, 10 MW	450 m <sup>2</sup> Nybygning
<b>TE04</b>	Apoteksenhed Varemodtagelse	4.250 m <sup>2</sup> Ombygning
<b>TE05</b>	Videnshus m. kontor- og møde-/konference	4.030 m <sup>2</sup> Ibrugtaget dec. 2018
<b>B7</b>	Diverse ombygninger på eksisterende SUH. Evt. også tværgående entrepriser for visse svagstrømsinstallationer i nybyggeri.	1.500 m <sup>2</sup> Ombygning,

# Tidsplaner



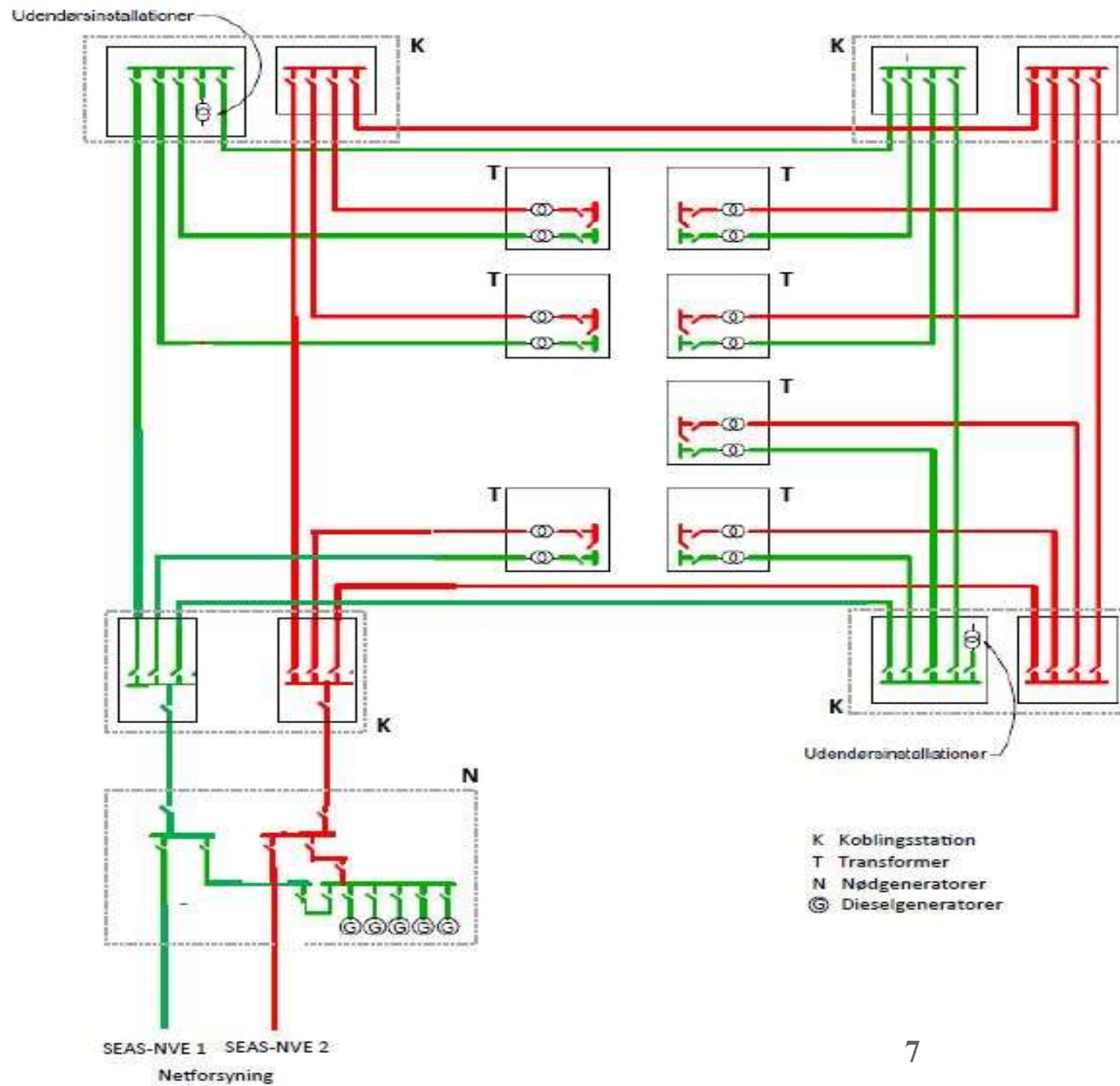
# Hovedforsyninger

## El-forsy.



# Hovedforsyninger

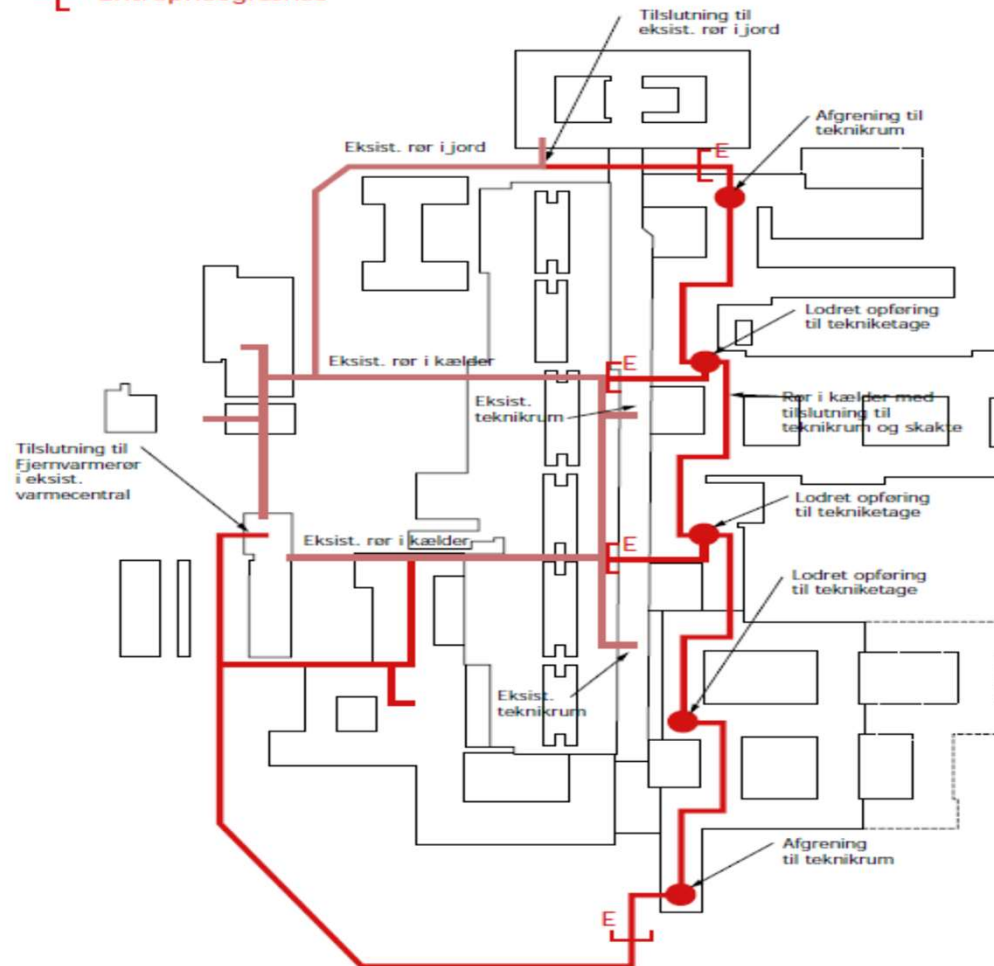
## El-forsy



# Hovedforsyninger

## Varme

- Nye ledninger
- Eksisterende ledninger
- ⊕<sup>E</sup> Entreprisegrænse

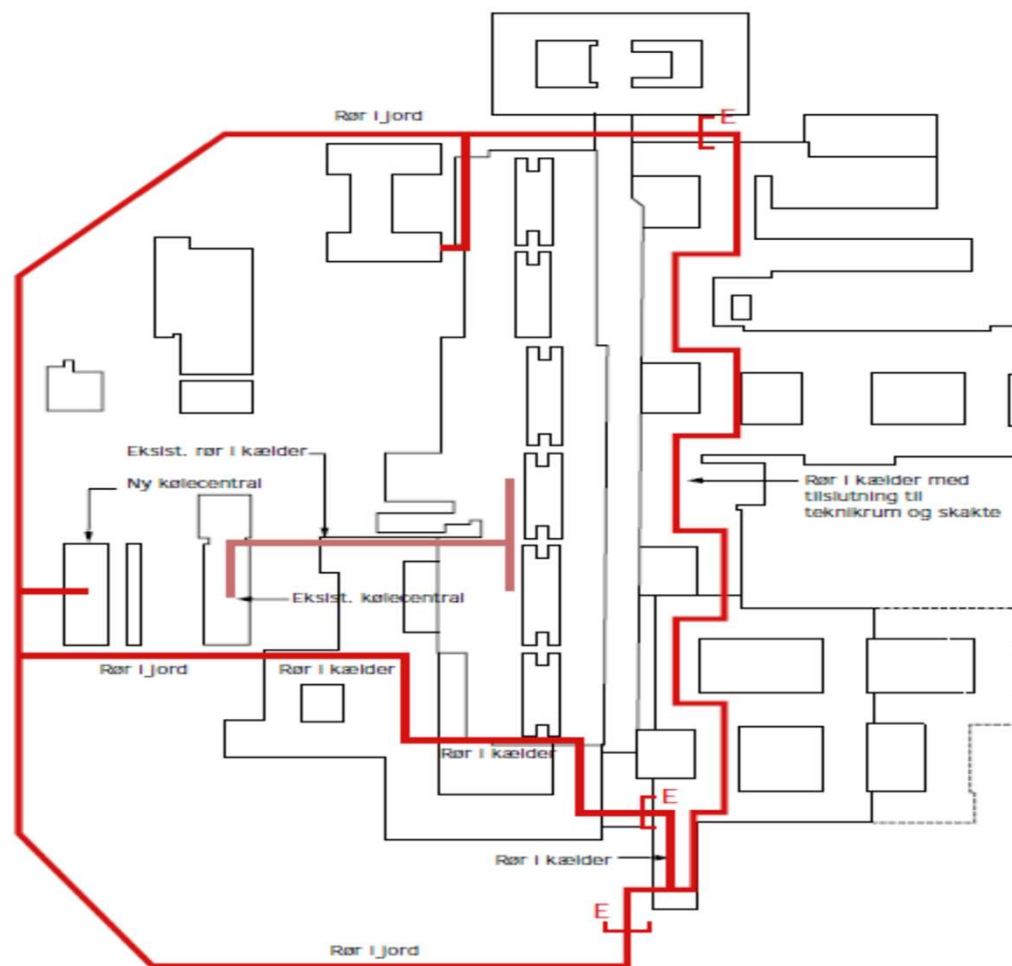




# Hovedforsyninger

## Køling

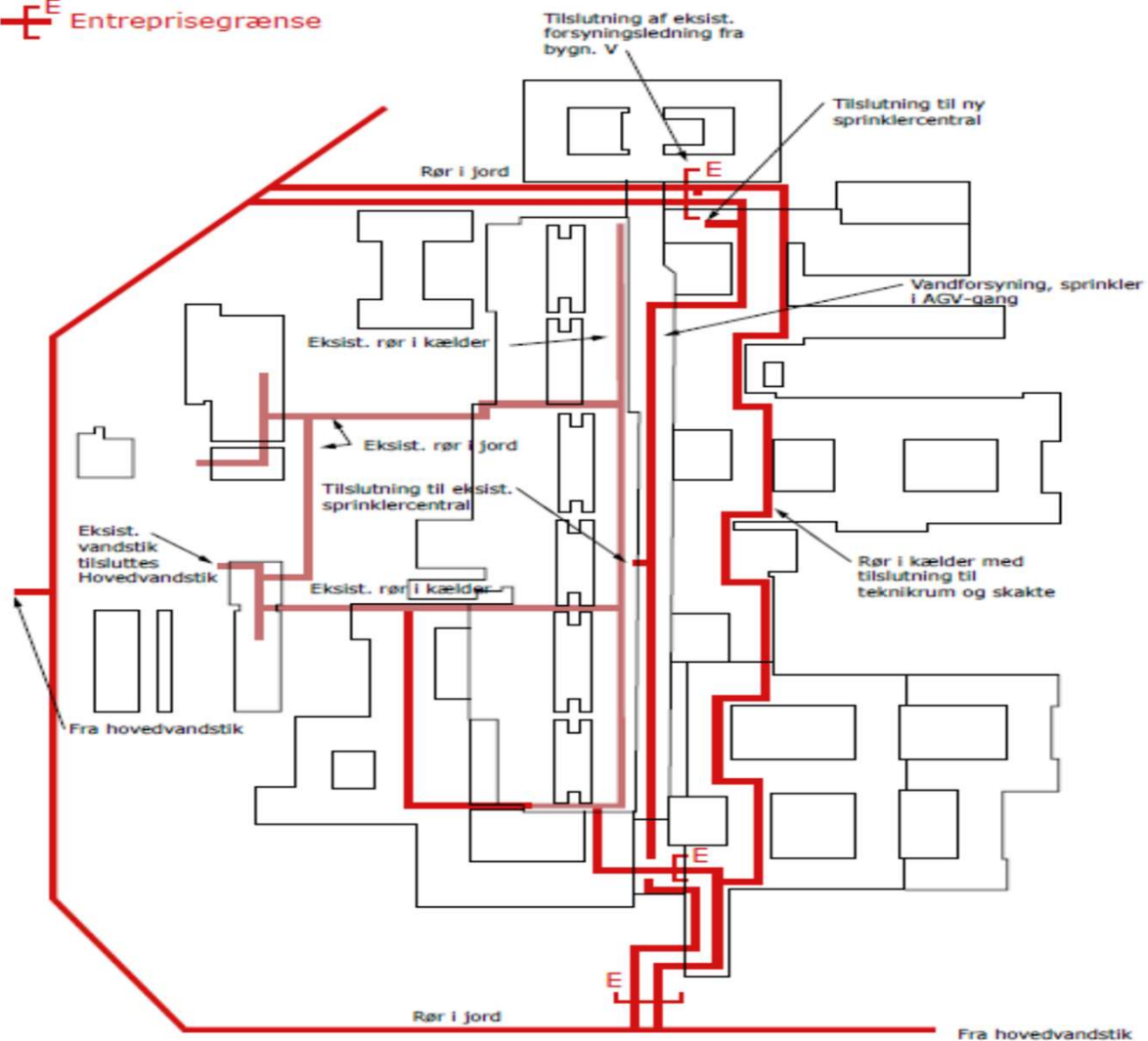
- Nye ledninger
- Eksisterende ledninger
- <sup>E</sup> Entreprisegrænse



# Hovedforsyninger

## Vandfor

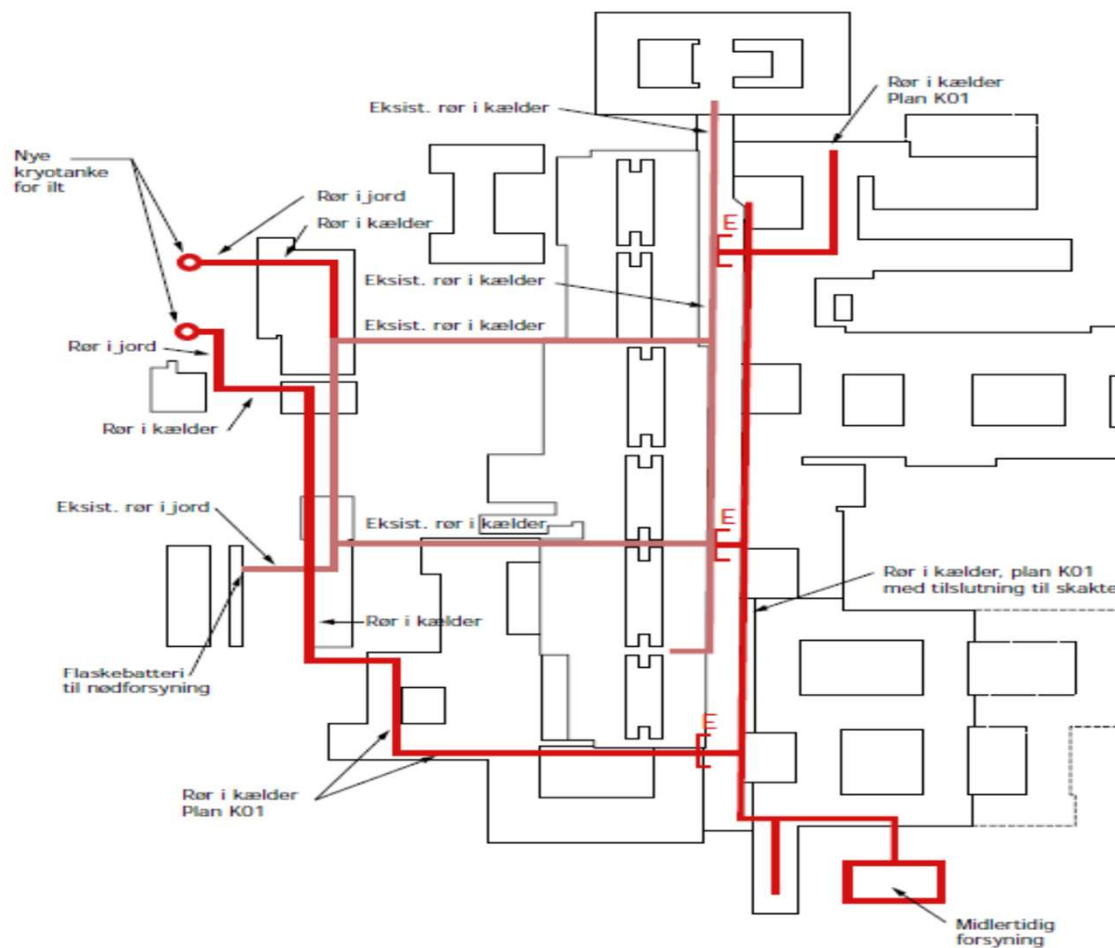
- Nye ledninger
- Eksisterende ledninger
- ⊞<sup>E</sup> Entreprisegrænse



# Hovedforsyninger


## Iltforsyning

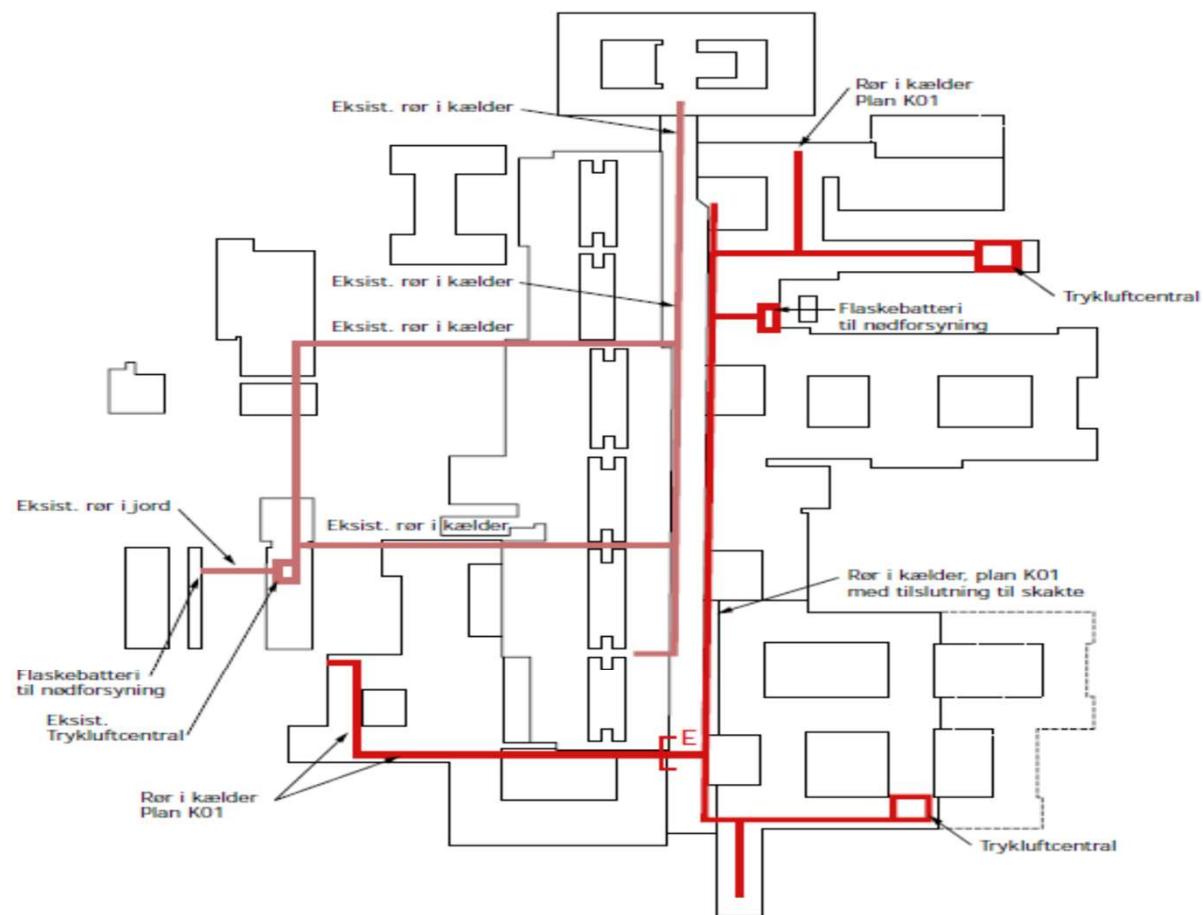
- Nye ledninger
- Eksisterende ledninger
- ⊕<sup>E</sup> Entreprisegrænse



# Hovedforsyninger




## Trykluft

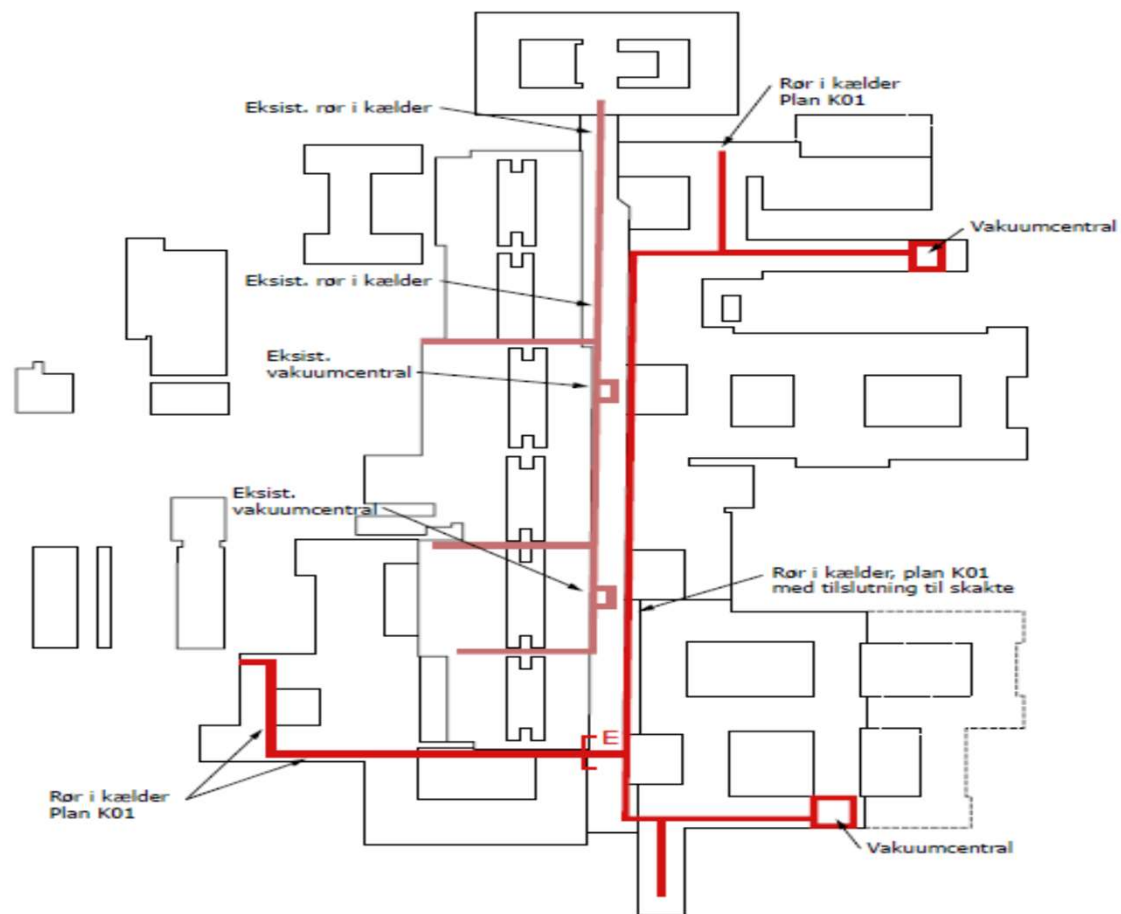
-  Nye ledninger
-  Eksisterende ledninger
-  Entreprisegrænse



# Hovedforsyninger





## Vakuum

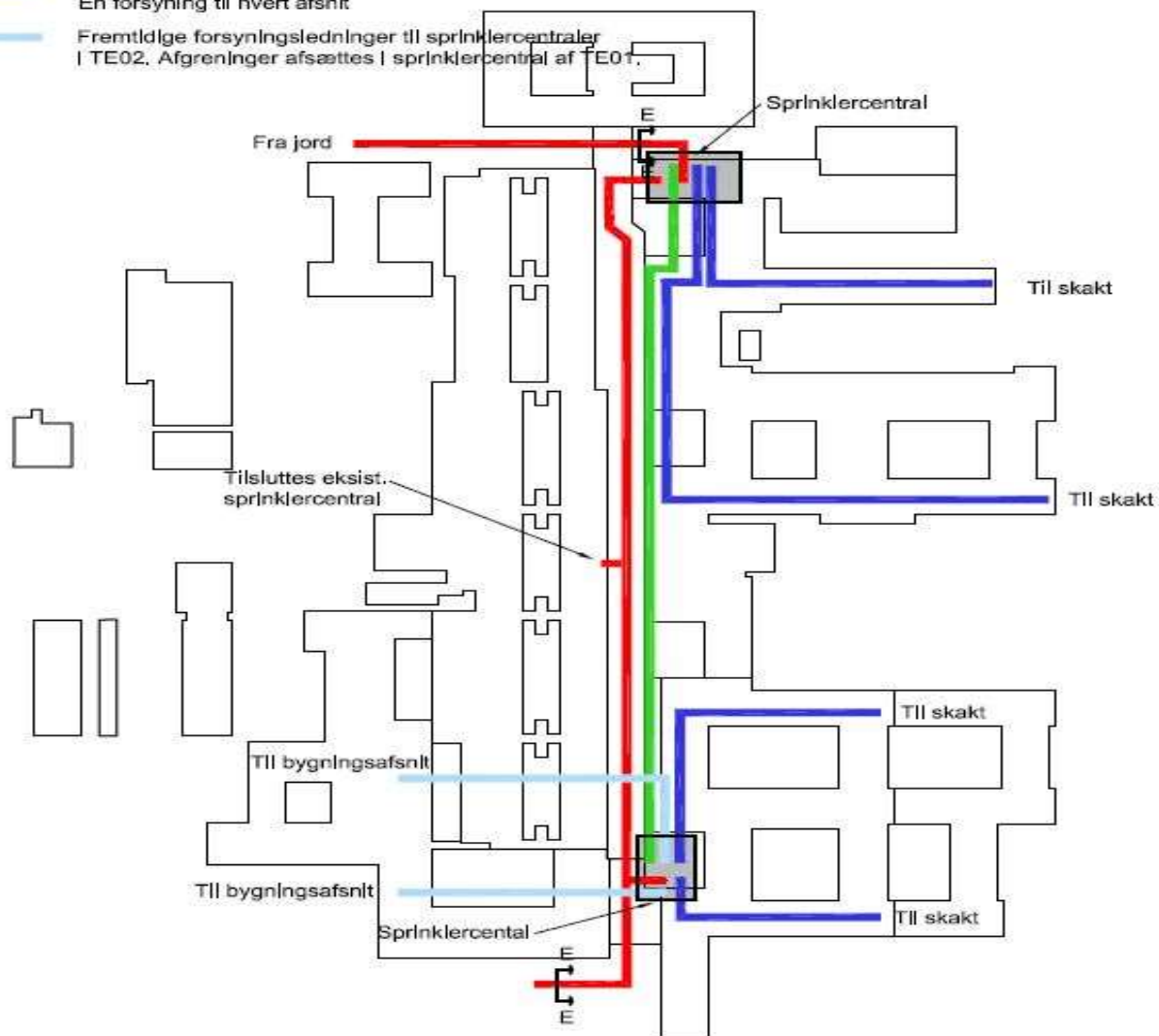
-  Nye ledninger
-  Eksisterende ledninger
-  Entreprisegrænse



# Hovedforsyninger

## Sprinkle

-  Ringledning
-  Intern forbindelse mellem centraler
-  Intern forsyning til bygningsafsnit.  
En forsyning til hvert afsnit
-  Fremtidige forsyningsledninger til sprinklercentraler  
i TE02. Afgrænninger afsættes i sprinklercentral af TE01.



# Design Manualer

## Udbudskrav -Teknisk

---

- Bygningsautomatik
- Bygningsdele
- **Commissioning**
- Grænseflader
- Heliport
- Indeklima
- IT-passiv
- IT-Referencearkitektur
- Landskab
- Lysdesign
- Mærkning
- Brandstrategi
- Sikring
- Stærkstrøm
- Ventilation
- Luftarter
- Tagvand, kloak, afløb og Sanitet
- Vand
- Varme og køl
- Forsyninger
- PTS
- Nedrivning
- Logistik
- Rumprogram

# Cx - Commissioning

## Omfang

- Ventilation
- Brandventilation
- Varme
- Køling
- Luftarter
- Sprinkleranlæg
- Brugsvand
- Dræn- og spildevandspumper
- BMS/CTS
- 10 kV mellemspændingsanlæg
- 10/0,4 kV transformeranlæg
- 10 kV generatoranlæg
- 0,4 kV UPS-anlæg
- SCADA-anlæg, højspænding
- Tavleanlæg
- Belysningsanlæg
- Alle sikringsanlæg, bl.a. AIA, TVO og ADK-anlæg
- Alle brandsikringsanlæg, bl.a. ABA og ABDL anlæg
- Luftarter
- Transportanlæg/elevatoreer.



## Handleplaner

- **Risikovurdering**
- **Fall Back løsninger**

## checklist - sprinkler mains 20190712

No	Action	building	room no	responsible	initials	Date	Time	remarks
1	Excavation of tracé			KPHT		2019.07.15	07:00	preparation and execution of the excavation. Excavation section will be 1,5 ml x 0,80 ml per 78 ml length. Part of excavation involve little bit the old existing road of the fire brigade, but it will be equally passable because on the area of the excavation section will be placed steel plates of the size of 2.5ml x 2.5 ml with a thickness of 2 cm therefore passable with 18 ton truck in every moment .
2	The valve for the sprinkler mains will be closed			SUH TA		2019.07.17	07:00	by the SUH technical department (SUH TA), as we will have to take action on incoming alarms on our systems.
3	It is verified that the valve is closed			KHPT/SUH TA		2019.07.17		
4	positioning of the pipe			KHPT		2019.07.17		The pipe will be laid on a sandy ground and cover with the same sand ( minimum 20 cm up and down of the pipe ) and the appropriate identification of the presence of pipes will be performed before to close the excavation. Cover of excavation it will be compacted in layers every 40 cm.
5	Welding of pipe			KHPT		2019.07.17		
6	Pressurization of pipe			KHPT		2019.07.17	13:00	When the pipe is ready for pressurization, SUH TA must be informed in order for them to be present when the pipe is pressurized again.
7	closure of the excavation			KHPT		2019.07.17	13:00	The closure of the excavation will begin on Wednesday 17th after checking that there is no water leak and in any case it will end on Thursday 18th.